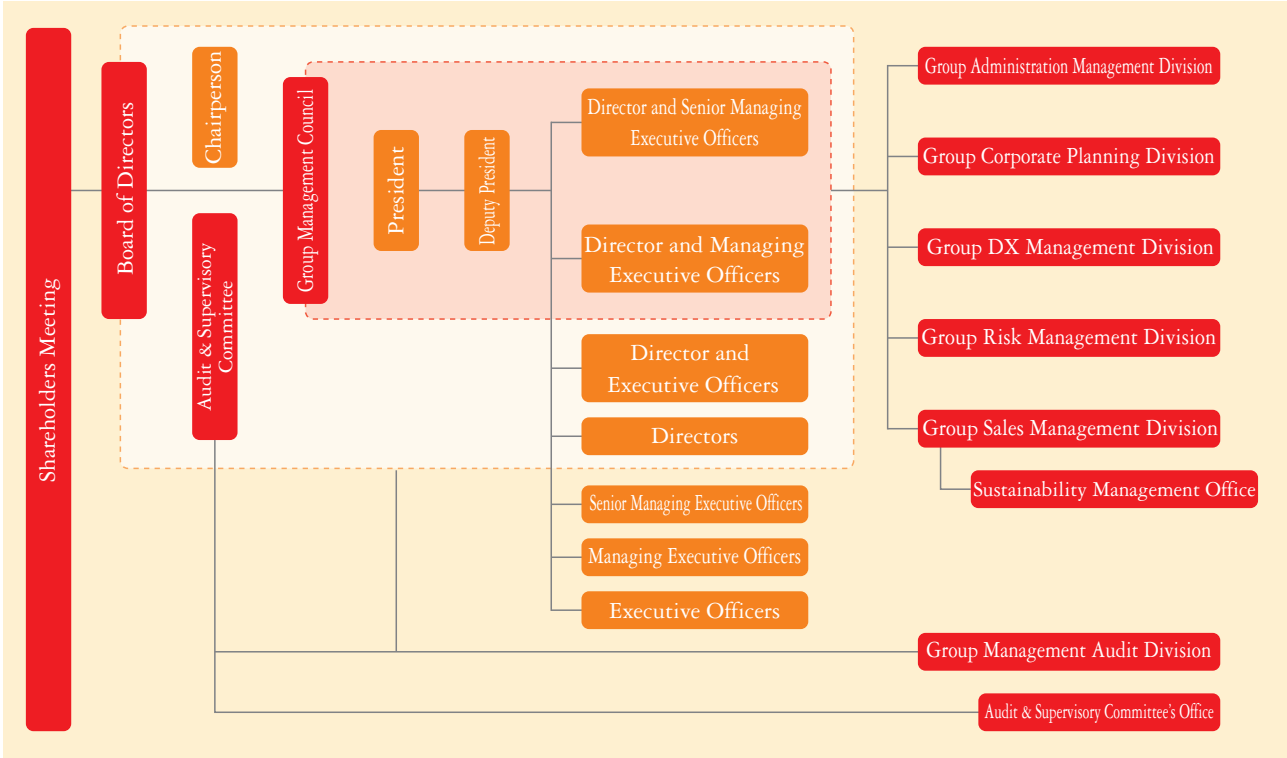




# Corporate Data

## Organizational Structure

(as of June 30, 2024)



## Group companies

(as of June 30, 2024)

Company name	Location	Business lines
The Juroku Bank, Ltd.	8-26 Kandamachi, Gifu-shi +81-58-265-2111	Banking service
Juroku Research Institute Co., Ltd.	7-12 Kandamachi, Gifu-shi +81-58-266-1916	Survey and research service, business consulting service
Juroku Tokai Tokyo Securities Co., Ltd.	7-12 Kandamachi, Gifu-shi +81-58-266-4516	Financial instruments service
Juroku Card Co., Ltd.	7-12 Kandamachi, Gifu-shi +81-58-263-1116	Credit card flotation service
Juroku Lease Co., Ltd.	7-12 Kandamachi, Gifu-shi +81-58-262-3116	Leasing service
Juroku Densan Digital Service Co., Ltd.	7-12 Kandamachi, Gifu-shi +81-58-262-1116	Payments and digital solutions service
NOBUNAGA Succession Inc.	7-12 Kandamachi, Gifu-shi +81-58-266-9161	Management succession and M&A advisory service
NOBUNAGA Capital Village Co., Ltd.	6-11-1 Kandamachi, Gifu-shi +81-58-264-5516	Operation and management of investment business limited partnership
Kanda Machi Okoshi Co., Ltd.	6-11-1 Kandamachi, Gifu-shi +81-58-262-1613	Consulting services related to local revitalization
Juroku Business Service Co., Ltd.	34 Nakatakeyacho, Gifu-shi +81-58-266-2682	Clerical work service
Juroku Credit Guarantee Co., Ltd.	7-12 Kandamachi, Gifu-shi +81-58-266-1616	Credit guarantee service

大好きなこの街の  
未来をつくろう。

CMギャラリーは  
こちら

